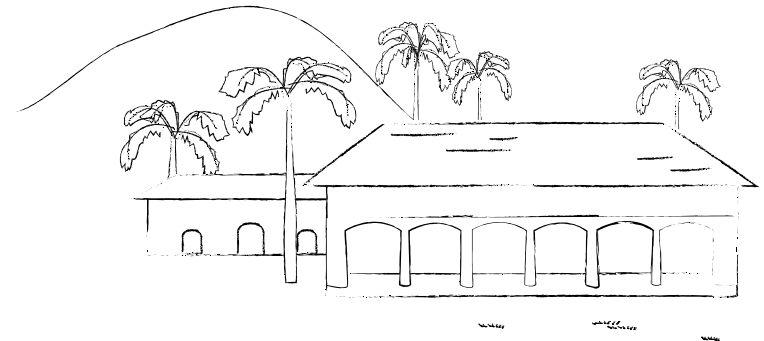
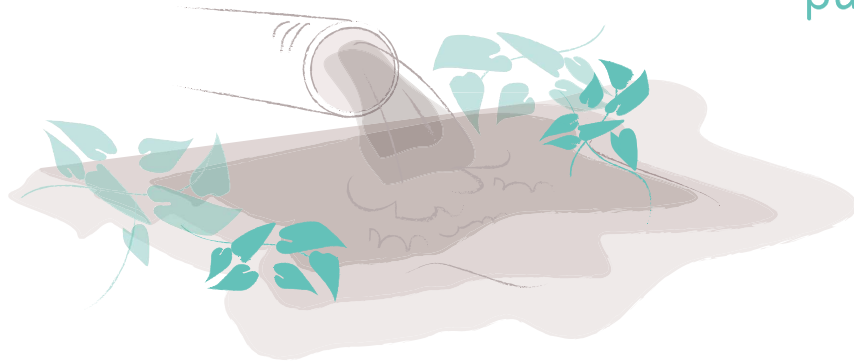


Wastewater from tourist areas

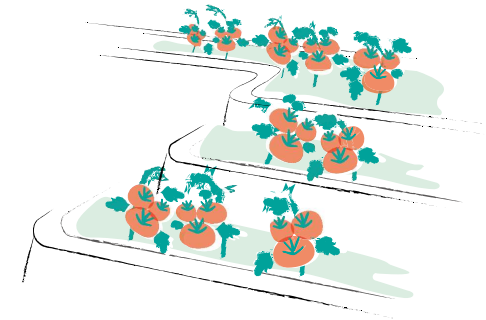
As tourism increases, so does wastewater, and artificial wetlands can be used to purify the wastewater. This will purify the wastewater and at the same time grow vegetables for use in the hotel. The purified water can also be used for hand washing and toilet water. This approach promotes environmentally friendly and sustainable hotel management.



Tourism impact on wastewater



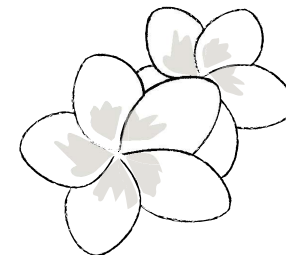
Artificial wetland purification



Grow flowers



Toilet water



Leachate from waste landfills

Waste water from garbage dumps and factories becomes groundwater and flows out to rivers and the ocean. By purifying the water in artificial wetlands before discharging it, we can protect the beautiful and abundant nature.



Leachate from landfills



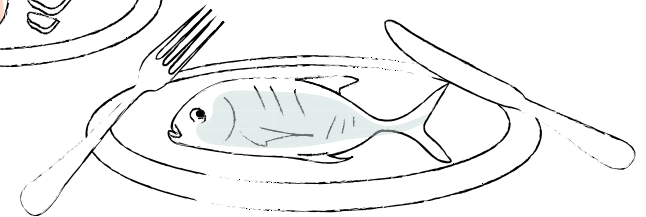
Artificial wetland purification



Clear sea

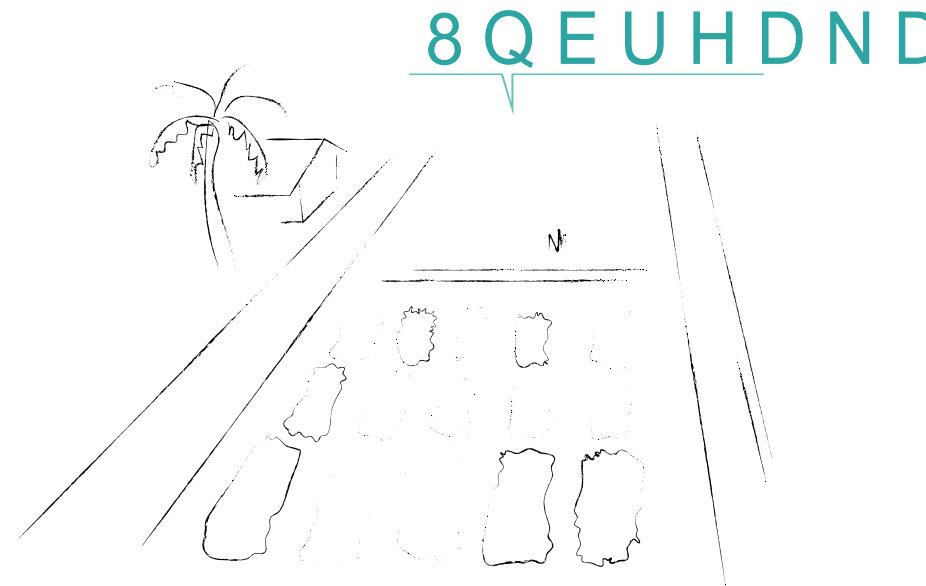
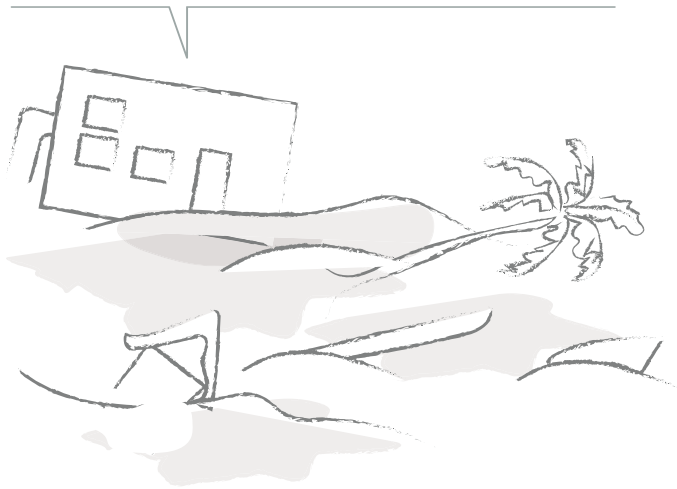


Safe seafood



Disasters are increasing due to climate change.
Purification systems using specialized equipment will be unusable in the event of a disaster.
However, artificial wetlands can be restored by residents even if damaged, and natural resilience can be expected.

Disaster disables purification facilities



Learning place to live in harmony with nature

Artificial wetlands are places where people learn to live in harmony with nature. Children who pick up trash will stop throwing it away. Understanding how nature cleans wastewater helps reduce water pollution, promoting an eco-friendly and sustainable lifestyle.

We treat our own wastewater.



Growing interest in wastewater treatment.



Organisms activity

Life without water pollution.